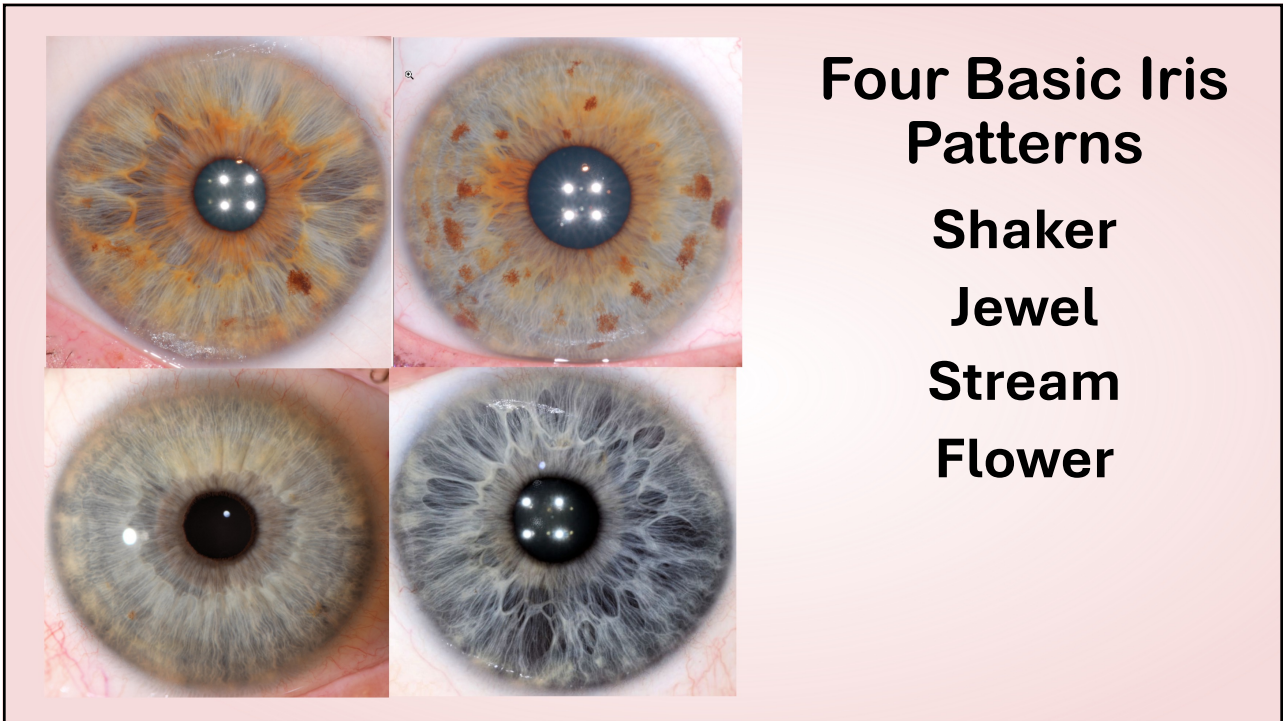


1



2

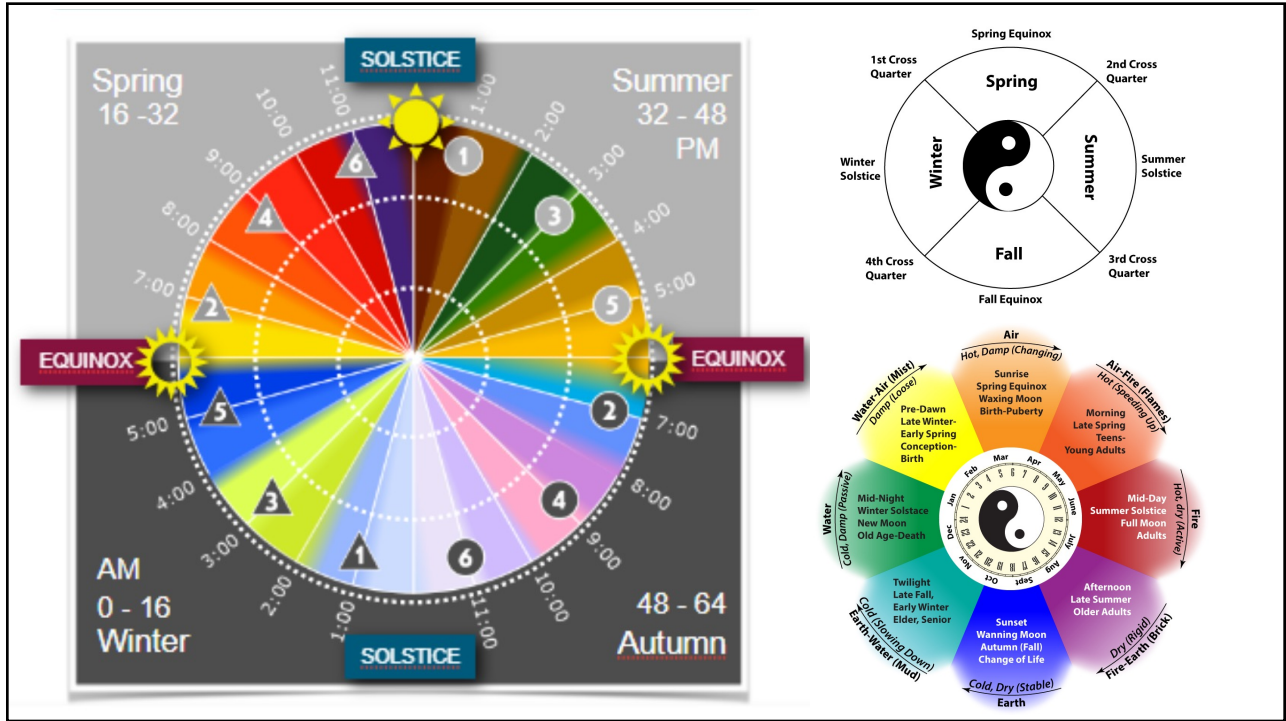
## Examples of Eight Basic Iris Patterns

- Jewel
- Shaker-Jewel
- Shaker
- Stream-Jewel
- Shaker-Flower
- Stream
- Stream-Flower
- Flower

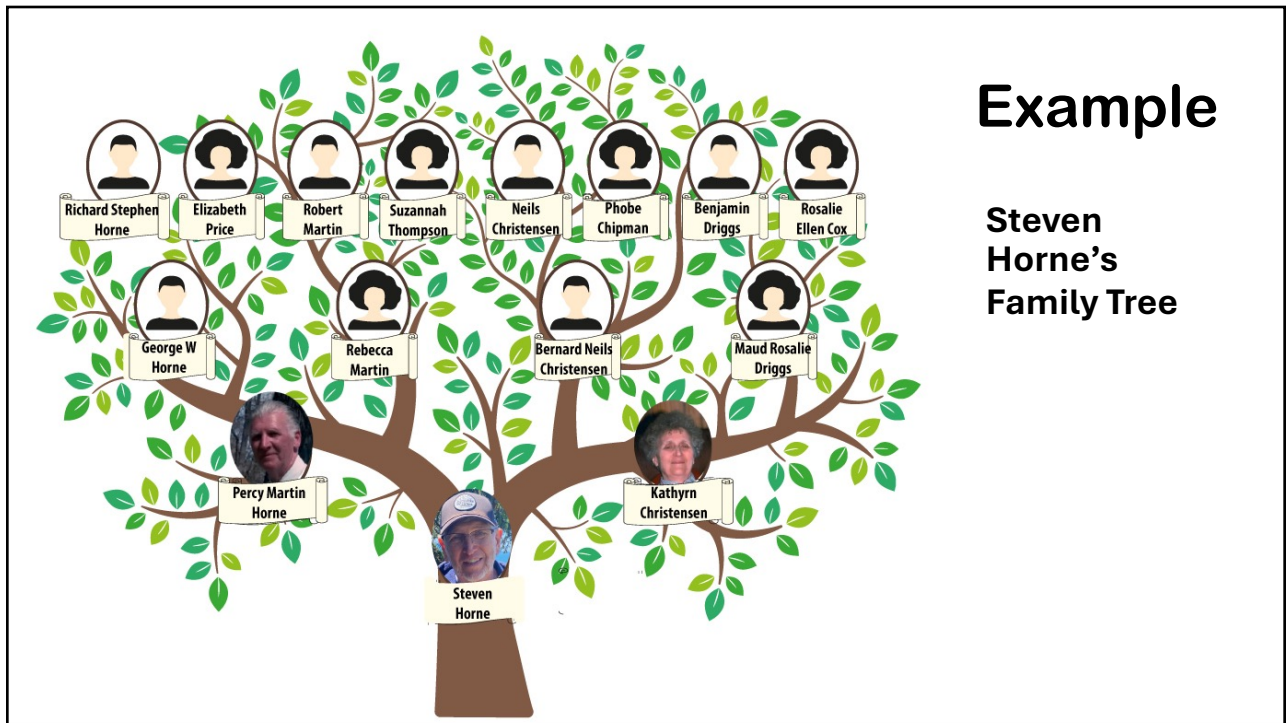
3

## Family Tree

4



5

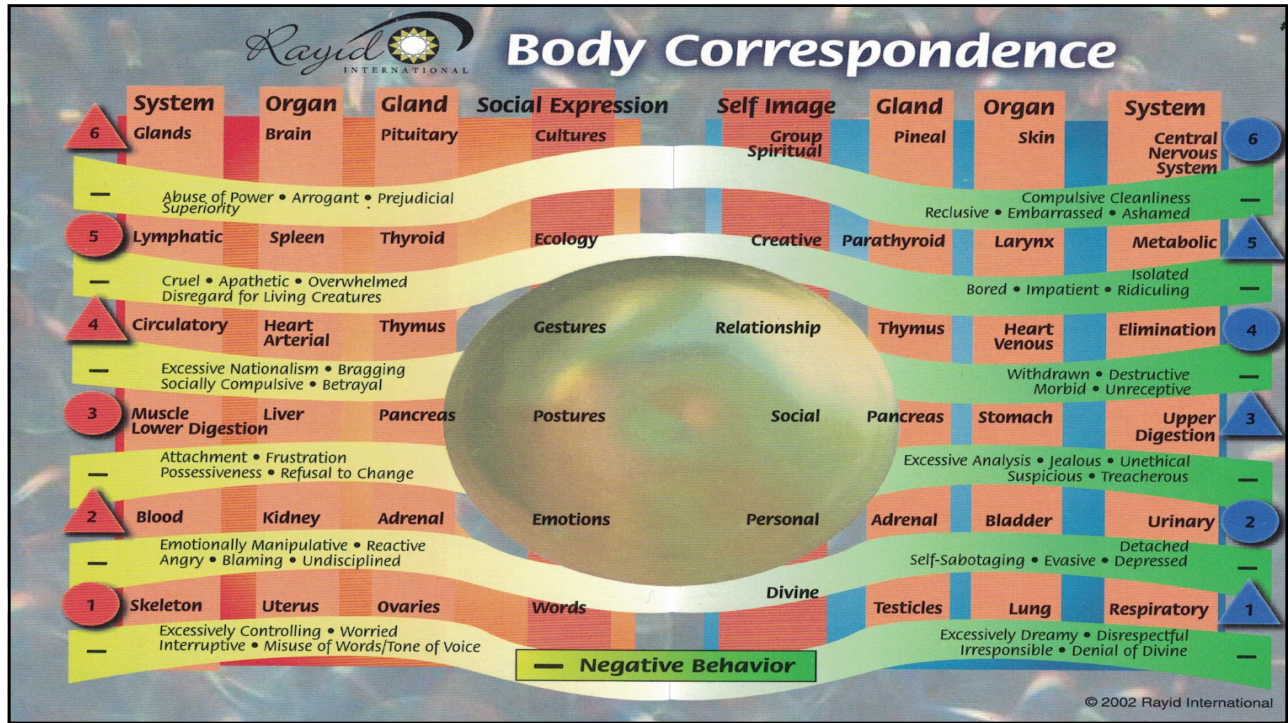


# Example

## Steven Horne's Family Tree

6





7

**Rayid International Birth Order**

Each person within the family tree is born with special qualities and gifts to be developed by the family and culture in which they reside. The health and happiness of an individual and the success of a society, depends on how well these abilities are cultivated. Each person is unique, and yet contains certain universal qualities that influence how they express their creativity. By wisely understanding the Birth Order of each child, their positive aspects are strengthened. This wisdom solves problems before they occur, and prepares the way for greater success in the future. Use these qualities listed below to identify and develop the many strengths of yourself and other family members.

**MENTAL**

- 1 The Dreamer, The Engineer
- 2 Solitary, Inner Creative
- 3 Respect, Listen, Freedom, Time
- 4 Father's Teacher, Protects Mother
- 5 Voluntary, Serves Others, Builder
- 6 Steadily Rebellious, Self Sabotaging
- 7 Peaceful, Humility, Seeking
- 8 Clavot, Grass, Air, Stars

**FEELING**

- 1 The Champion, The Achiever
- 2 Emotionally Determined, Strong
- 3 Direction, Physical Interaction, Limits
- 4 Needs Father, Protects Mother
- 5 Goal-Oriented, Competitive, Emotional
- 6 Anxious, Blame, Cynical, Reactive
- 7 Self-Disciplined, Respect, Enthusiasm
- 8 Bull, Volcano, Fire, Sun

**PHYSICAL**

- 1 Strategist, Chameleon
- 2 Clever, Diplomat, Quick
- 3 Challenged, Alert, Inner Mechanics
- 4 Shy, Watchful, Balances Parents
- 5 Strategic, Controller, Negotiator
- 6 Manipulative, Secret, Unethical
- 7 Honesty, Clarity, Expression
- 8 Fox, Fish, Coyote, Mouse, Metal

**ACTION**

- 1 Mr. Charisma, The Joker, The Executive
- 2 Social, Physical, Active
- 3 Attention, Optimism, Creativity
- 4 The King, Brings Life to Parents
- 5 Entertainer, Chief, Organizer
- 6 Careless, Indifferent, Depressive
- 7 Alliances, Loyalty, Management
- 8 Bull, Goliath, Thunder, Truck

**BENEVOLENCE**

- 1 The Artist, The Genius, The Poet
- 2 Perfectionist, Gentle, Inspired
- 3 Compassion, Touch, Solitude
- 4 Invention, Obedient, Supports Parents
- 5 The Server, Healer, Mechanic
- 6 Confused, Dependent, Isolated
- 7 Expression, Focus, Independence
- 8 Lamb, Deer, Sand, Desert

**GROUP DYNAMICS**

- 1 The General, The Master
- 2 Alert, Dynamic, Social, Dominant
- 3 Wisdom, Commitment, Freedom
- 4 Movement, Guides, Challenges Parents
- 5 Director, Leader, Politician
- 6 Decisive, Great, Abiding
- 7 Leadership, Humility, Tolerance
- 8 Tsunami, Earthquake, Grassy Bear

**MENTAL**

- 1 The Queen, The Matriarch
- 2 Mature, Mental, Close to Family
- 3 Trust, Closeness, Appreciation
- 4 Complies with Mother, Wants Father
- 5 Family Oriented, Teaches, Solves Problems
- 6 The Controller, Sati, Sensitive
- 7 Now, Summer, Play
- 8 Mother Hen, Dogmatist, Mountain

**FEELING**

- 1 The Priestess, The Mysterious
- 2 Cool, Subtle, Self-Conscious
- 3 Respect, Fantasy, Privacy, Gentleness
- 4 Self-Reliant, Sensitive, Independent
- 5 Designer, Success Oriented, Soft
- 6 Longer, Precious, Manipulative
- 7 Communicative, Inorganic
- 8 Moon, Lake, Water, Cat

**PHYSICAL**

- 1 Wise Woman, Earth Goddess
- 2 Community Awareness, Physical, Traditional
- 3 Information, Nature, Touch
- 4 Preserves Life, Family Stability
- 5 Healer, Community Resource, Mediator
- 6 Blended, Dependent, Critical
- 7 Justice, Memory, Touch
- 8 Wood, Tree, Flair

**ACTION**

- 1 The Grace, The Changer, The Warrior
- 2 Mentally Focused, Globally Alert
- 3 Recognition, Privacy, Freedom
- 4 Changes Values, Challenges Parents
- 5 Inspires Visionary, Teaches, Precipitous
- 6 Inclusive, Careless, Rebel
- 7 Reaches, Non-Judgment
- 8 Lightning, Ocean, Rose, Wolf

**BENEVOLENCE**

- 1 The Compassionate, The Unifier
- 2 Socially Sensitive, Gentle
- 3 Ecology, Supports, Care
- 4 Cares Parents and Family
- 5 Innocent, Server, Nurturer
- 6 Confused, Reactive, Overwhelmed
- 7 Love for All Creatures
- 8 Animals, Gentle Brook, Dove

**GROUP DYNAMICS**

- 1 The Visionary, The Miraculous
- 2 Socially Generative, Religious
- 3 Patience, Spiritually Oriented, Gracious
- 4 Increases Family Connections, Changes
- 5 Successful, Conquers, Visionary
- 6 Demanding, Fearful, Detached
- 7 Eclipses, Snow, Snow, Tower
- 8

Use and combine these brief descriptions.

The Yin Son has the same characteristics as the 1st one, the 6th as the 2nd, and so on.

1 Personality Type 2 Innermost Nature 3 Needs from Parents 4 Relationship to Parents  
5 Ideally Becomes 6 When Imbalanced 7 Lessons 8 Symbol in Nature

\$6.95

**Family Tree Continuum**

This is a living connection between all members of the family tree. Each family member brings attributes and universal qualities for the entire family to realize and enjoy. Taking time to observe and appreciate the contribution of each Grandparent increases the corresponding universal quality for future generations. Each of the 12 birth order positions has within it, lessons to be learned and positive abilities to be expressed. Where we embody the lesson of each position, a natural ability is accessed, and we are more capable of receiving the universal quality from a corresponding grandparent.

Starting with the #1 boy at the bottom, notice how the blue line links all the Yin positions with grandparents from the mother's family, and the red line links all the Yang positions with the father's family. Taking a few minutes each day to dwell on the continuum of these connections increases these abilities and qualities within yourself and your family.

1-800-743-0179 • E-mail: info@rayid.com • www.rayid.com © 2002 Rayid International

8